

MrSID



MrSID Module for MapInfo®

About MrSID

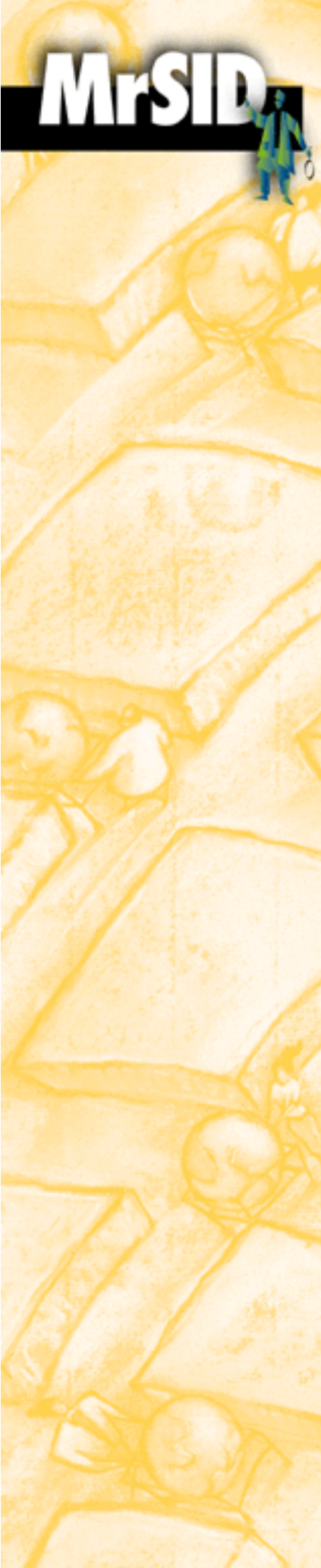
The MrSID™ Portable Image Format™ for Geospatial is a revolutionary raster image file format from LizardTech designed specifically for GIS professionals to enable true portability of massive images. MrSID reduces the size of your high-resolution images to less than 3% of their original size while maintaining the quality and accuracy of the original. Now, multiple image sets can be seamlessly mosaicked automatically into a single image that can be zoomed and panned instantaneously locally or over the Internet. MrSID is compatible with all popular GIS applications and web browsers.

Zoomed in on a MrSID image in MapInfo. The original dataset contained well over 10 gigabytes worth of data; in MrSID format, the entire image is smaller than 500 megabytes, and views in seconds.



Introducing the MapInfo® Module

The free MapInfo®MrSID Module allows instantaneous viewing of .sid images in the popular desktop mapping program. Like any other raster image in MapInfo, users can zoom, pan, and navigate throughout the .sid image and overlay vector data. By taking full advantage of the multiple resolutions built-in to .sid images, multiple gigabyte images can now be viewed in MapInfo quickly and easily. And now, the MrSID Viewer can be used to generate a TAB geo-referenced file for any .sid image.



Contents

About MrSID	1
Introducing the MapInfo®Module	1
System Requirements	2
Acknowledgements	2
Installation	3
Installed Files	3
Viewing in RGB Mode	3
Using the MrSID MapInfo Module	4
Opening a .sid Image	4
Image Registration	6
Opening Images with TAB Files	7
Creating TAB Files Using the MrSID Viewer	7
If the Image Does Not Display	8
Contacting LizardTech	8

System Requirements

No additional system resources are required to use the MrSID MapInfo Module.

Acknowledgements

Installation

Double-click on the MrSID_MapInfo.exe file. Follow the prompts to complete the installation.

By default, the files are placed in C:\Program Files\MapInfo\Professional. If your MapInfo root directory is located elsewhere, select the correct folder during the installation process. To find the correct folder, find the Mapinfo.exe file. The folder containing this file is the correct folder for installation.

Installed Files

The installation program installs the following files:

mrsid.rheMapInfo resource file
mrsid32.dllMrSID decompress dll
mrsid_mapinfo.pdfThis help file in PDF format

Viewing in RGB Mode

By default, MapInfo displays all imagery in 8-bit mode. While this color conversion increases viewing speeds of 24-bit RGB imagery, it may also cause considerable degradation in image quality.

To view RGB images in 24-bit mode, make sure your monitor is set to view 24-bit or true color. Then follow these steps to add the UseTrueColor system variable to the Windows® registry.

- 1) Select the *Start* menu, then select *Run*. Type "regedit" and select *OK*.
- 2) Select the following regedit directory: HKEY_LOCAL_MACHINE > SOFTWARE > MapInfo > Common
- 3) Select the *Edit* menu. Then select *New* and *DWORD*.
- 4) Name the new variable "UseTrueColor."
- 5) Right-click on *UseTrueColor* and select *Modify*.
- 6) Enter 1 in the data value box. (To revert to 8-bit view, change the 1 to a 0).
- 7) Select *OK* and close the registry.
- 8) Restart MapInfo.

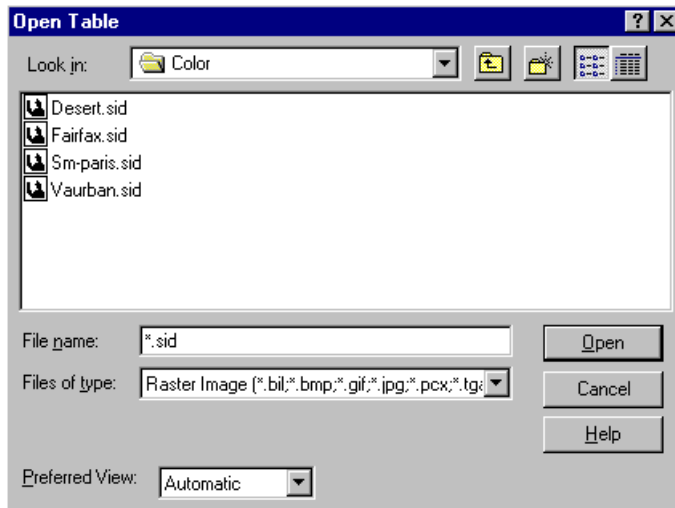
MrSID for MapInfo

MrSID



*MrSID images in the Open Table dialog box after *.sid is specified.*

Step Three: After the Raster Image option has been selected, MapInfo must still be told that the image to search for is a .sid file. Enter *.sid in the File name field and hit the Return key.



As soon as Return is hit, all available .sid image icons in the current directory display in the dialog box. Select a .sid image from the current directory or navigate to an alternate directory. Once a .sid image has been selected, click Open.

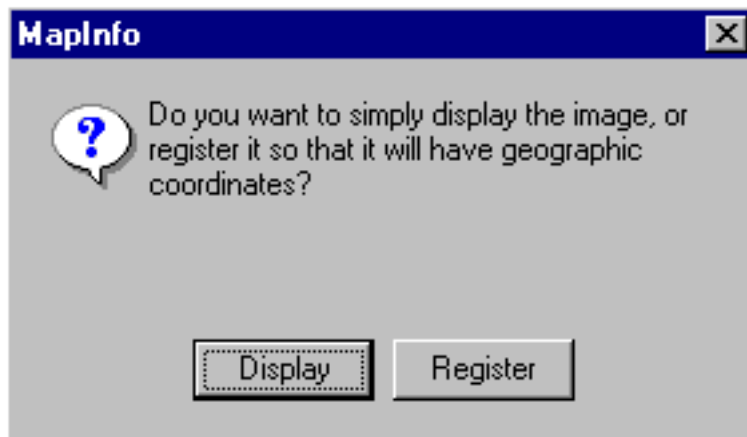


Image Registration

There are two methods of registering images to a map scale in MapInfo: using a .tab file associated with the image, or manually registering the image using the “three anchor-points” method. This guide explains the viewing of non-registered .sid imagery. For information on registering an image using the “three anchor-points” technique, consult your MapInfo help documentation.

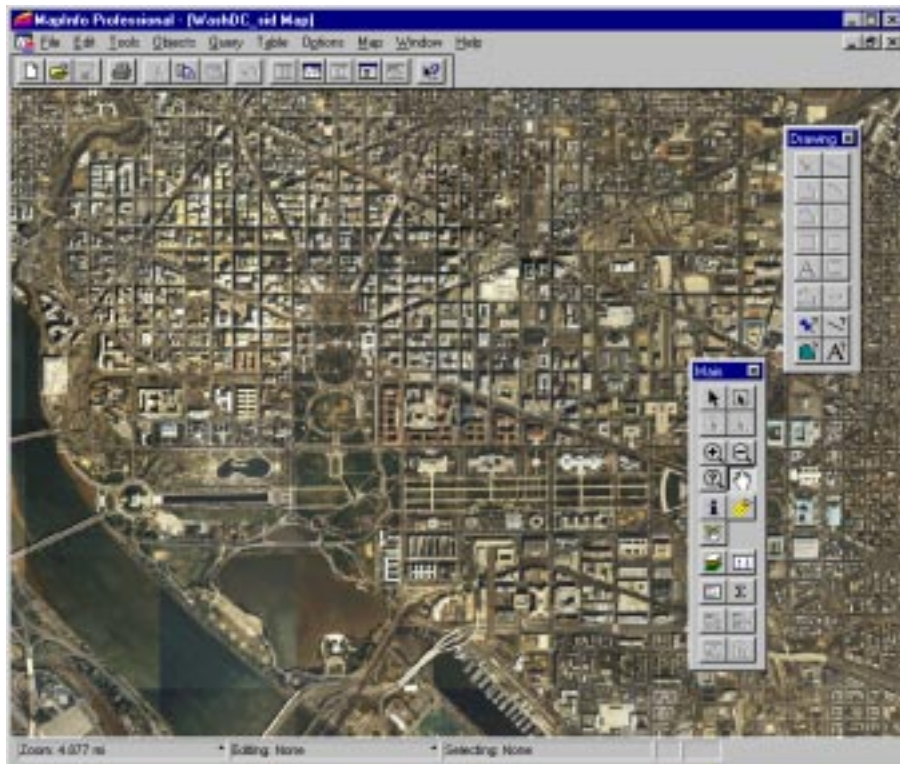
When a non-registered .sid image is selected for viewing, a dialog box appears asking if the user wants to register or simply display the image:

The Display or Register dialog box.



Select *Display*. The image appears in a new Map window.

Our image displayed in MapInfo.

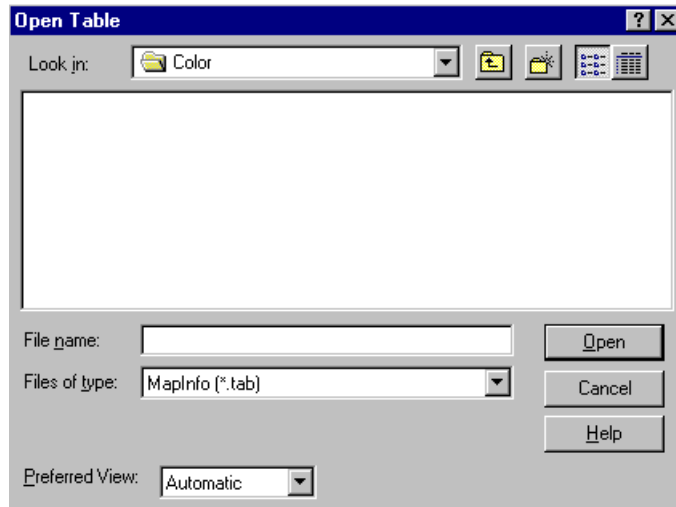


The image may be viewed using the same tools as any image in MapInfo. Vector data may be added and saved with the image.

Opening Images with TAB Files

When opening a .sid image which has an accompanying TAB geo-referencing/registration file, select the File menu and Open Table.... (or, if the Quick Start dialog box is open, select Open a Table and click OK). The Open Table dialog box displays.

The Open Table dialog box.



Navigate to the TAB file associated with the desired .sid image, and click Open.

Creating TAB Files Using the MrSID Viewer

Currently, each TIFF file exported from the MrSID Viewer for Windows includes a MapInfo TAB file. When an entire .sid image is exported as TIFF, the TAB file may be used with the viewed .sid image by editing a single line in the file.

To edit the file, open it in any Windows text editor. The file contains a line resembling the following:

File "C:\Images\Test\image_one.tif"

Edit this line so that the path points to the viewed .sid image. The TAB file will now accurately register the .sid file when viewed in MapInfo.

Future releases of the MrSID Viewer will allow a the creation of a .sid-registration TAB file at the click of a button. These files will provide accurate registration for the .sid image when viewed in MapInfo.



The Layer Control button.

If the Image Does Not Display

If a selected .sid image displays as a white Map window, follow these steps:

1) Select the Map menu item and click Layer Control..., select Ctrl+L, or click the Layer Control button in the Tool Bar.



2) Make sure the .sid image is selected.

3) Click Display....

4) Deselect the Display within Zoom Range option.

5) Select OK on both the Display and Layer Control dialog boxes.

The image will now display in the Map window.

Contacting LizardTech

The National Building
1008 Western Ave. 2nd Floor • Seattle, WA 98104
Phone: 206-320-9969 • Fax: 206-320-0989
<http://www.lizardtech.com>
techsupport@lizardtech.com

©1999, LizardTech, Inc.

No part of this document may be reproduced or transmitted by any means without permission from the copyright holder.